



**COUNCIL FOR MEDICAL SCHEMES**

**Private Bag X34, HATFIELD, 0028  
Hadeffields Block E, 1267 Pretorius Street, HATFIELD**

**Phone: +27 (0) 12 431-0500**

**Fax: +27 (0) 12 430-7644**

**[Http://www.medicalschemes.com](http://www.medicalschemes.com)**

**To:  
All medical schemes, administrators, health  
care provider organizations and other  
interested parties**

Enquiries: Stephen Harrison

Email: [s.harrison@medicalschemes.com](mailto:s.harrison@medicalschemes.com)

Date: 22 November 2004

## **CIRCULAR 54 OF 2004**

### **NATIONAL HEALTH REFERENCE PRICE LIST 2005: DENTAL AND OTHER SCHEDULES**

1. The following additional 17 schedules of the National Health Reference Price List (NHRPL) have been published on our website, to take effect on 1 January 2005:
  - ☐ Biokinetics
  - ☐ Chiropractors
  - ☐ Clinical technologists
  - ☐ Dental therapists
  - ☐ Dentists
  - ☐ Dieticians
  - ☐ Hearing aid acousticians
  - ☐ Hospice
  - ☐ Medical technologists
  - ☐ Nurses and nursing agencies
  - ☐ Orthoptists
  - ☐ Occupational therapists and art therapists
  - ☐ Physiotherapists
  - ☐ Podiatrists
  - ☐ Psychologists
  - ☐ Social workers
  - ☐ Speech therapists and audiologists
2. These schedules are contained in an updated Access database, which also includes the medical practitioners' schedule previously released. This version of the database is identified as version 2.02. Also provided is a Word document that describes the structure of the database.
3. As previously indicated, all schedules available as at Wednesday 24 November will also be published on that date on the web-based portal of our website, and downloadable in various formats.

Chairperson: Prof. Nicky Padayachee Vice-Chairperson: Ms Gando Matyumza Chief Executive & Registrar: Patrick Masobe

A STATUTORY BODY ESTABLISHED IN TERMS OF THE MEDICAL SCHEMES ACT, 1998 (ACT 131 OF 1998)

Please take note of the following issues:

#### 4. **Dental**

- a) Various changes have been made to the 2004 coding structure, in consultation with the South African Dental Association. These changes are designed to ensure more accurate and appropriate billing.
- b) Costing evaluations were carried out to our satisfaction on certain consultation-related codes, resulting in above-inflationary increases on these codes. The affected codes, and their corresponding 2005 values, are listed below:

<input type="checkbox"/>	8101	-	R107.40
<input type="checkbox"/>	8102	-	R161.20
<input type="checkbox"/>	8104	-	R 53.70
<input type="checkbox"/>	8189	-	R 53.70
<input type="checkbox"/>	8176	-	R 75.20
<input type="checkbox"/>	8190	-	R107.40
<input type="checkbox"/>	8145	-	R 43.00
<input type="checkbox"/>	8501	-	R137.10
<input type="checkbox"/>	8701	-	R137.10
<input type="checkbox"/>	8801	-	R137.10
<input type="checkbox"/>	8901	-	R137.10
<input type="checkbox"/>	9201	-	R137.10

- c) Codes 8109 and 8110 have been deleted as the value of these codes was costed into the overheads of the codes listed above.
- d) The projected impact of these changes on dental expenditure by medical schemes (assuming no benefit limits) are as follows:

<input type="checkbox"/>	Basic dentistry	-	9.08%
<input type="checkbox"/>	Specialised dentistry	-	5.45%
<input type="checkbox"/>	<b>Overall impact</b>	-	<b>7.09%</b>

#### 5. **Medical Technologists**

Medical technologist fees have been restored to the 17% differential on pathology fees which historically applied. This gives rise to an **11.86%** projected expenditure increase on medical technology. Please note that, in the database, item details for the Medical Technology source (edition 2005 onwards) are contained under the practice type '37600' attached to Items belonging to the Medical Practitioners source.

## 6. **Occupational therapy and art therapy**

Please note that the schedules for occupational therapy and art therapy have been combined into a single schedule, with different columns for prices of the two practice types. Note the significant changes to the values on procedures in this schedule since publication of the draft schedule have no significant financial impact.

## 7. **Medical practitioners: erratum**

The following note in the medical practitioner, below item 4076, was erroneously left in the schedule and has now been deleted:

"Item 4075 can only be charged for a maximum of 5 times per 24 hour period, and item 4076 only once per 24 hour period."

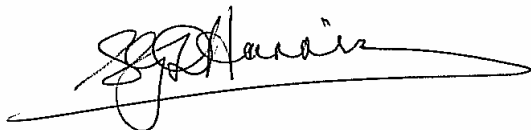
## 8. **Outstanding schedules**

a) At this point in time, the following schedules which formed part of the 2004 NHRPL have yet to be released:

- ☐ Ambulances
- ☐ Genetic counselors
- ☐ Homeopaths
- ☐ Mental health institutions
- ☐ Physical rehabilitation hospitals
- ☐ Private hospitals
- ☐ Radiography
- ☐ Radiology
- ☐ Sub-acute facilities
- ☐ Unattached operating theatres

b) In addition, during December we hope to release schedules for psychometrists and drug and alcohol rehabilitation centres, although the first version of the latter list may be zero-rated pending further costing evaluations. In addition, you will be advised of any developments regarding publication of schedules for optometry and orthotics and prosthetics.

Sincerely



**Stephen Harrison**  
**SENIOR SPECIALIST: POLICY AND SPECIAL PROJECTS**

Chairperson: Prof. Nicky Padayachee Vice-Chairperson: Ms Gando Matyumza Chief Executive & Registrar: Patrick Masobe

A STATUTORY BODY ESTABLISHED IN TERMS OF THE MEDICAL SCHEMES ACT, 1998 (ACT 131 OF 1998)

# National Health Reference Price List Database V2.0

## 1 Introduction

All the components of the NHRPL are kept in a Microsoft Access Database. From this database Microsoft Word and Excel versions of the price lists can be generated. The database is named NHRPL V02.02 and the last part of the name "V02.02" changes with each version of the database. The structure of the database is depicted in Figure 1. The NHRPL database contains elements that describe the contents of the price lists themselves as well as support elements used to generate the printed or spreadsheet versions of the NHRPL, in addition to elements used in managing the price list. Figure 1 contains a diagram of the complete NHRPL database.

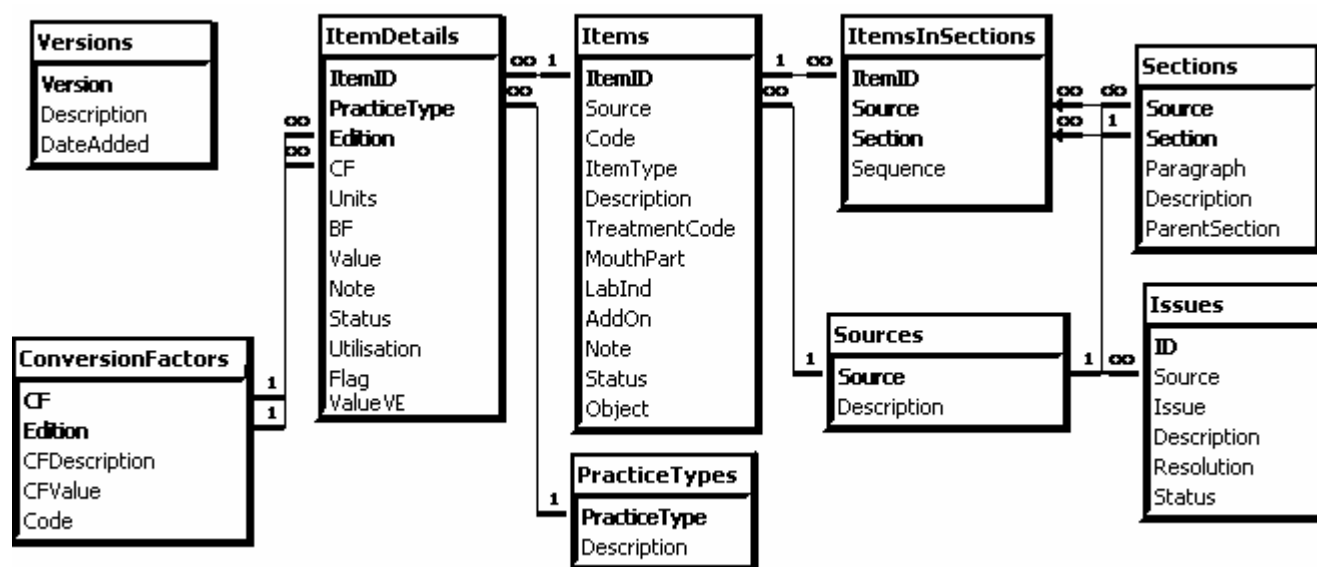


Figure 1 : NHRPL Database Structure

## 2 Core Tables

### 2.1 Sources

Item codes are only unique within a particular discipline and this table lists all the professions or disciplines for which a unique sub set of the NHRPL could exist. The source is equivalent to the concept of "publication" in the old BHF scale of benefit.

**NOTE:** The Itemdetails (edition 2005 onwards) for the Medical Technology source is contained under the practice type '37600' attached to Items belonging to the Medical Practitioners source.

### 2.2 Items

This table contains the actual items of the NHRPL. Items are uniquely identified by a numerical code within a source. In addition to this unique source-code combination, each item is also uniquely identified by a numerical item id. This item id is used internally to link related tables together. The Items table contains four types of items:

1. *Rules*. Identified by the value 'R' in the ItemType field. Contains the text of billing rules applicable to the price list.

2. *Modifiers*. Identified by the value 'M' in the ItemType field. Modifiers are codes used in conjunction with one or more items to modify or further specify the amount charged for a particular item.
3. *Notes*. Identified by the value 'N' in the ItemType field. Notes provide information to assist in the interpretation or application of rules, modifiers and items of the price list and can appear throughout the price list.
4. *Items*. Identified by the value 'I' in the ItemType field. These are the actual items of the price list. They uniquely identify the service components for which the price list contains reference prices.

Code fields are only unique within a source and item type; ItemIDs are unique across sources and item types.

## 2.3 PracticeTypes

Items may have prices or relative value units that vary between different practice-types of a particular profession or discipline. This table contains a list of all practice types. In V02.02 the PracticeType field has increased to a 5 digit field in order to cater for sub-disciplines. The PracticeType code has the following form: CDDSS, where 'C' represents the professional council responsible for the discipline, DD is the discipline and SS the subdiscipline. The field "PracticeTypeO" contains the V01 value of the PracticeType to assist in the conversion process. Special practice type codes "10000" represent all medical specialist disciplines and "10099" represent general practitioners and specialists other than the designated specialty(ies) in case of restricted services.

## 2.4 ItemDetails

This table contains the actual pricing information for each item. Items may have different prices for different practice types. A history of previous values of items is maintained through the concept of editions. An edition is identified by the year in which it was produced. The current database contains editions for 2003, 2004 and 2005. The value field can be derived by multiplying the Units field with the benefit factor (BF) and the value of the conversion factor (RCF) corresponding to the edition of interest. The code of the applicable RCF is contained in the CF field. The field ValueVE contains the VAT exclusive price, which is Value/1.14 and rounded using the current rounding rules.

**NOTE:** The Itemdetails (edition 2005 onwards) for the Medical Technology source is contained under the practice type '37600' attached to Items belonging to the Medical Practitioners source.

## 2.5 ConversionFactors

The relative value units (RVUs) assigned to an item is multiplied by a random conversion factor (RCF) to obtain the actual random price of the item. Different RCFs may apply to subsets of items within a particular source. A history of previous values of a RCF is also kept through the concept of editions in a similar way to the item details.

## 3 Publication Tables

These tables are used to specify the layout of publications or documents containing a particular part of the NHRPL. Publications usually cover one specific source.

### 3.1 Sections

This table contains all the section headings for a particular source. Section headings appear in numerical sequence based on the section field. The ParentSection field may be used to specify the hierarchical relationship between sections, but is not implemented for all sources. If a section heading has a paragraph number it will appear in the paragraph field.

## 3.2 ItemsInSections

This table links an item to the one or more sections of a publication it can appear in. It also specifies the sequence in which items will appear. It is possible to list items from a different source in the sections from a particular source. This is used for the Medical Technology publication. In this publication certain sections are linked to items occurring in the Medical Practitioners publication (source).

## 4 Other Tables

### 4.1 Issues

Records in this table document issues identified either by provider organisations themselves or through other means. These issues were considered in finalising the NHRPL.

### 4.2 Versions

Each new version of the NHRPL is documented in this table.

## 5 Detail Table Layouts

### 5.1 Sources

Field	Description
Source	3 digit numerical code uniquely identifying a source
Description	Text description of the source

### 5.2 Items

Field	Description
ItemID	Unique key
Source	3 digit numerical code uniquely identifying a source, foreign key from Sources table
Code	5 digit numerical code
ItemType	R)ule; M)odifier; I)tem; N)ote; H)eading
Description	Textual description of an item
TreatmentCode	Used only in dental items (See Section F)
MouthPart	Used only in dental items (See Section F)
LabInd	Used only in dental items (See Rule 003)
AddOn	Indicates a code to be used as an add-on to another code
Note	Explanatory notes – not part of publication
Status	C)urrent; D)eleted; A)dded; U)pdated
Object	Contains a Word object of formatted additional text (eg annexure tables) Use fmItemsObjects form to view

### 5.3 PracticeTypes

Field	Description
PracticeType	5 digit numerical code uniquely identifying a practice type
Description	Text description of the practice type
PracticeTypeO	3 digit numerical code containing the value of the PracticeType code prior to V2

## 5.4 ItemDetails

Field	Description
ItemID	The item to which the detail belong (foreign key from Items table)
PracticeType	Pratice type to which the detail applies (foreign key from PracticeTypes table)
Edition	Year of list release
CF	Conversion factor code (foreign key from ConversionFactors table)
Units	Number of relative value units
BF	Benefit factor value
Value	Units * CF * BF
Note	
Status	C)urrent; D)eleted;A)dded;U)pdated
Utilisation	Number of hits from Discovery and Medscheme data – Obsolete from V2 onwards
Flag	Specific functions in different sources
ValueVE	VAT exclusive price (=Value/1.14 and rounded)

## 5.5 ConversionFactors

Field	Description
CF	Unique conversion factor id
Edition	Year of validity
CFDescription	Conversion factor description
CFValue	Value of the conversion factor
Code	Conversion factor code used by SAMA

## 5.6 Sections

Field	Description
Source	Source in which this section appears
Section	Unique section number within source (determine section sequence)
Paragraph	If the section contains a paragraph number, this contains the paragraph number text
Description	Section heading text
ParentSection	Parent section of this section in an hierarchical arrangement of section headings

## 5.7 ItemsInSections

Field	Description
ItemID	Item linked to this section
Source	Source id – needed to uniquely identify section in which this item appears
Section	Section in which this item appears (an item can be linked to more than one section)
Sequence	Used to arrange all items in a section in particular order

## 5.8 Issues

Field	Description
ID	ID uniquely identifying an issue
Source	Source to which this issue applies
Description	Issue description
Resolution	How the issues will be/have been resolved

Field	Description
Status	Status of issue – Undefined; Accepted; Considered; Referred back; Concluded;

## 5.9 Versions

Field	Description
Version	Version number of the form '00.00' The first part only changes with new editions.
Description	A description of changes made to the particular edition
DateAdded	Date on which the version was added